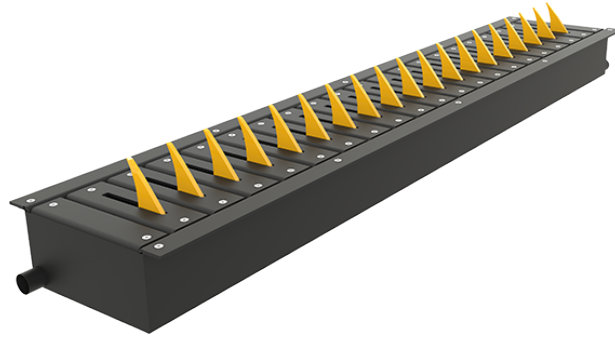


TYRE KILLER TECHNICAL SPECIFICATIONS (TKU SERIES)



Operation	<p>Uni-directional.</p> <p>Spikes retract independent from each other with the movement of the vehicle passing in the free flow direction.</p> <p>Gets back to its normal position by springs.</p>
Free Flow Direction	One way only
Spikes	<p>10mm thick, 90mm high (other heights optionally available), electro galvanised steel, independently moving in the free flow direction.</p> <p>Modular spikes can be replaced one by one.</p>
Body	<p>Body embedded into the ground, galvanised steel material, reinforced structure, modular connections to provide utmost axle load resistance.</p> <p>Can be produced according to the required width (with 97mm intervals).</p> <p>Includes water drainage holes.</p>
Finish	<p>Spikes: Electrostatic powder coated on electro galvanised steel in yellow color (other colors are optionally available).</p> <p>Body: Electrostatic powder coated on galvanised steel in black color (other colors are optionally available).</p>
Operation Temperature, Humidity	<p>Unlimited</p> <p>(freezing of moving parts shall be avoided).</p>
Recommended max. Speed	5 km/h
Axle Load Capacity	Thanks to the modular connections 50 tons.
Installation	Easy installation with bolts and concrete anchorage.

